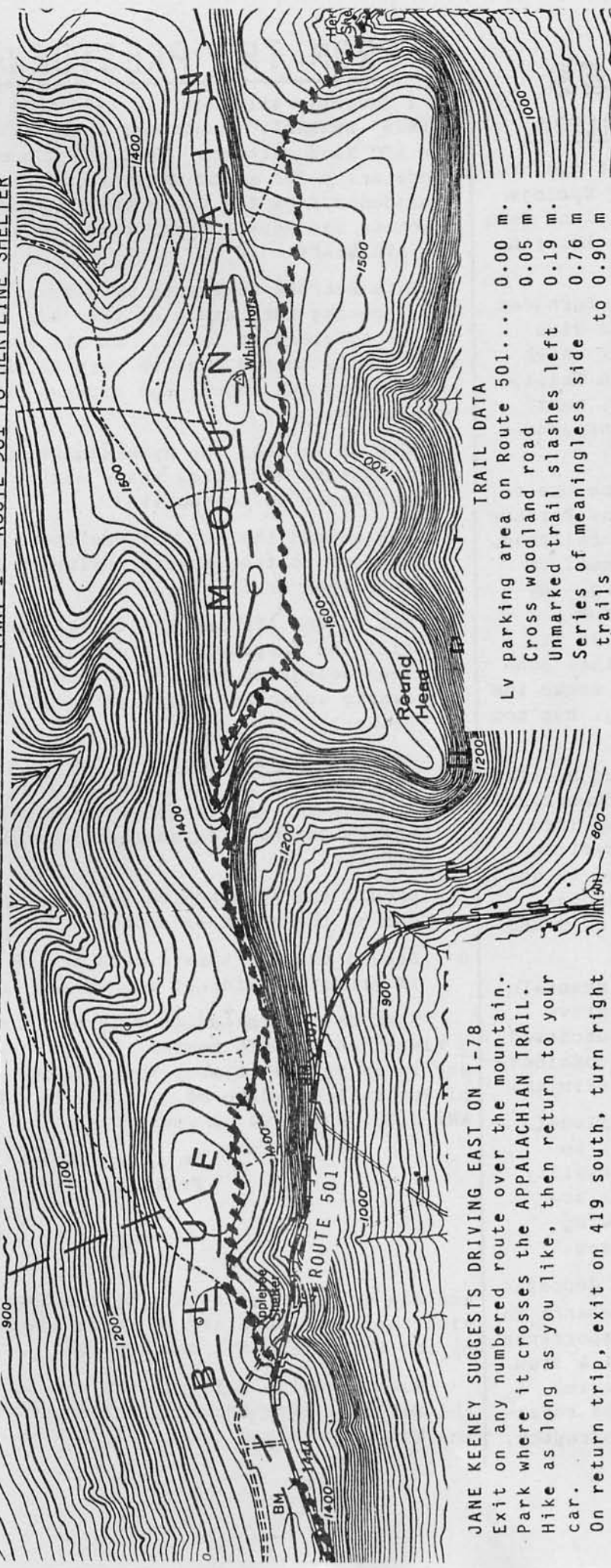


OUR FAVORITE HIKES No. 30 - JANE KEENEY'S CHICKEN HIKES - PART 1 - ROUTE 501 TO HERTLINE SHELTER



JANE KEENEY SUGGESTS DRIVING EAST ON I-78
 Exit on any numbered route over the mountain.
 Park where it crosses the APPALACHIAN TRAIL.
 Hike as long as you like, then return to your car.
 On return trip, exit on 419 south, turn right on OLD ROUTE 22, and stop at Kauffman's Chicken Bar-B-Q Ranch. This is the real purpose of these hikes: Bar-B-Qed Chicken.
 Location, Old Route 22 between Routes 419 & 501.

TRAIL DATA
 LV parking area on Route 501.... 0.00 m.
 Cross woodland road 0.05 m.
 Unmarked trail slashes left 0.19 m.
 Series of meaningless side trails to 0.90 m
 Turn right on Trail coming in from the left 2.33 m
 Turn right again on trail coming in from left 3.24 m
 Ar Hertline Shelter 4.00 m.
 Retrace trail to your car. 8.00 m.

