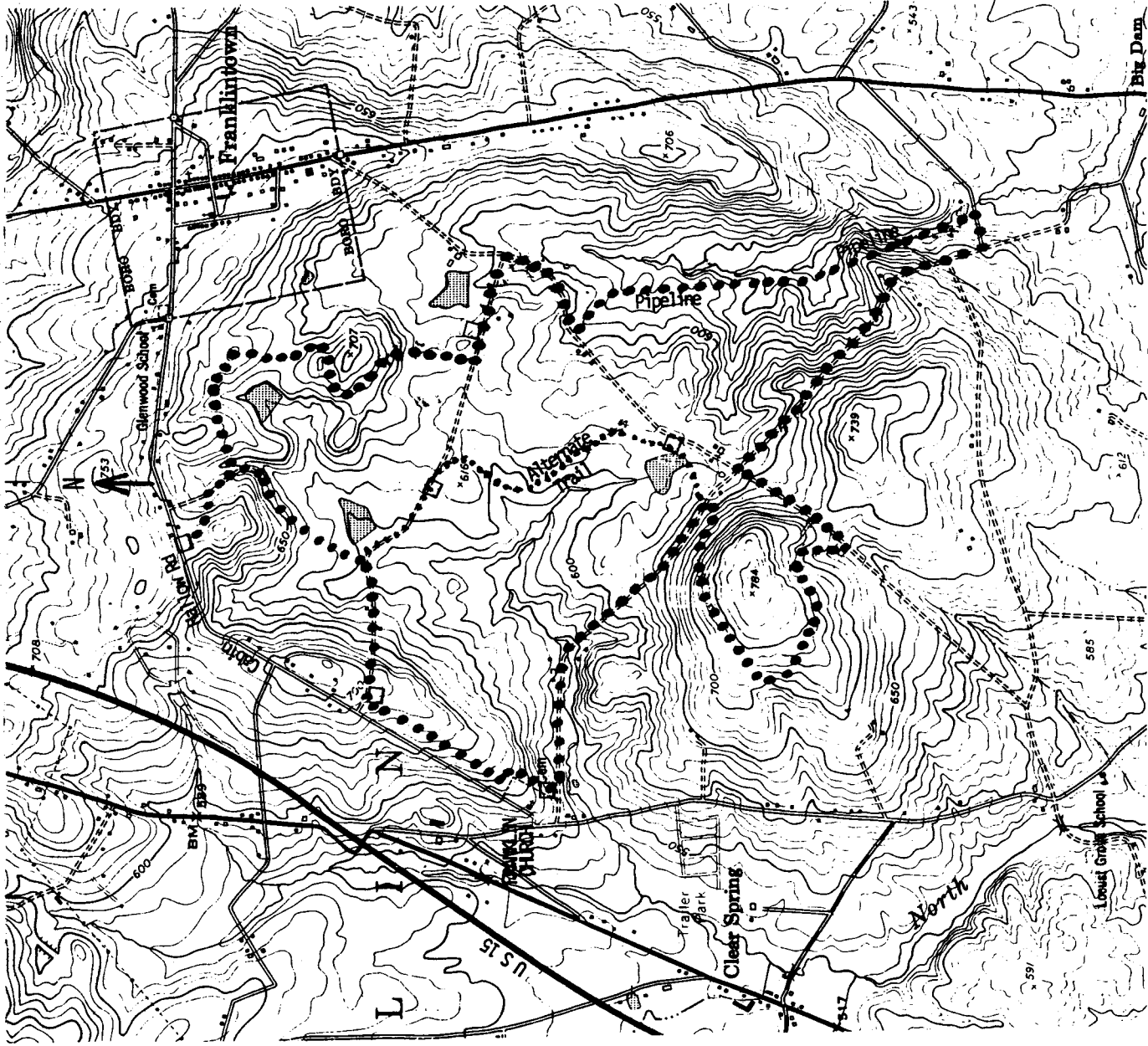


OUR FAVORITE HIKES - NO. 24 - FRANKLINTOWN GAME LANDS 243

□ = Parking lots.



The "trails" in these game lands offer an infinite variety of hikes, by combining old farm roads and lanes, dirt roads and moderate "bushwhacking" over gently rolling hills and fields. We, generally, park at the Game Commission Parking Lot on Cabin Hollow Rd, about a mile outside Franklinton. We are showing several alternatives, with the longest going 7-8 miles.

From the rear of the parking lot, walk a short distance and drop down to an old farm road. This winds around and comes to a maintained road in .58 m; Turn right and follow this road to another parking area on the left in .84 m. Turn left, following a line of trees until you reach the Franklin Church Cemetery, dropping down to another parking lot in 1.37 m. Turn left and follow dirt road to an old farm lane on right, 2.16 m. The old farm lane cuts back about 1450.

Follow it up hill to an open field, bearing left and following another old farm lane down to another road, 3.29 m. Turn left on this road to an intersection with another road, 3.63 m. Turn right and follow this road to another intersection, 4.84 m; Turn left and reach pipeline, 5.03 m; Follow the pipeline until you reach a dirt road, 6.05 m; turn right to next intersection, 6.34 m; then left, reaching another parking lot, 6.53 m. Shortly after the parking lot, turn right into field and follow crude trail thru field, eventually reaching the farm road we started on 7.61 m; and back to our parking lot in 7.79 m.

The hike can be shortened by using the alternative, which we have shown, and which is about 1.16 m long. This can reduce the length of the hike to about 3.9 miles by using the alternative to loop back.

Or by using the alternate trail in lieu of the route to the Cemetery, the trip can be shortened to 7.37 m.