

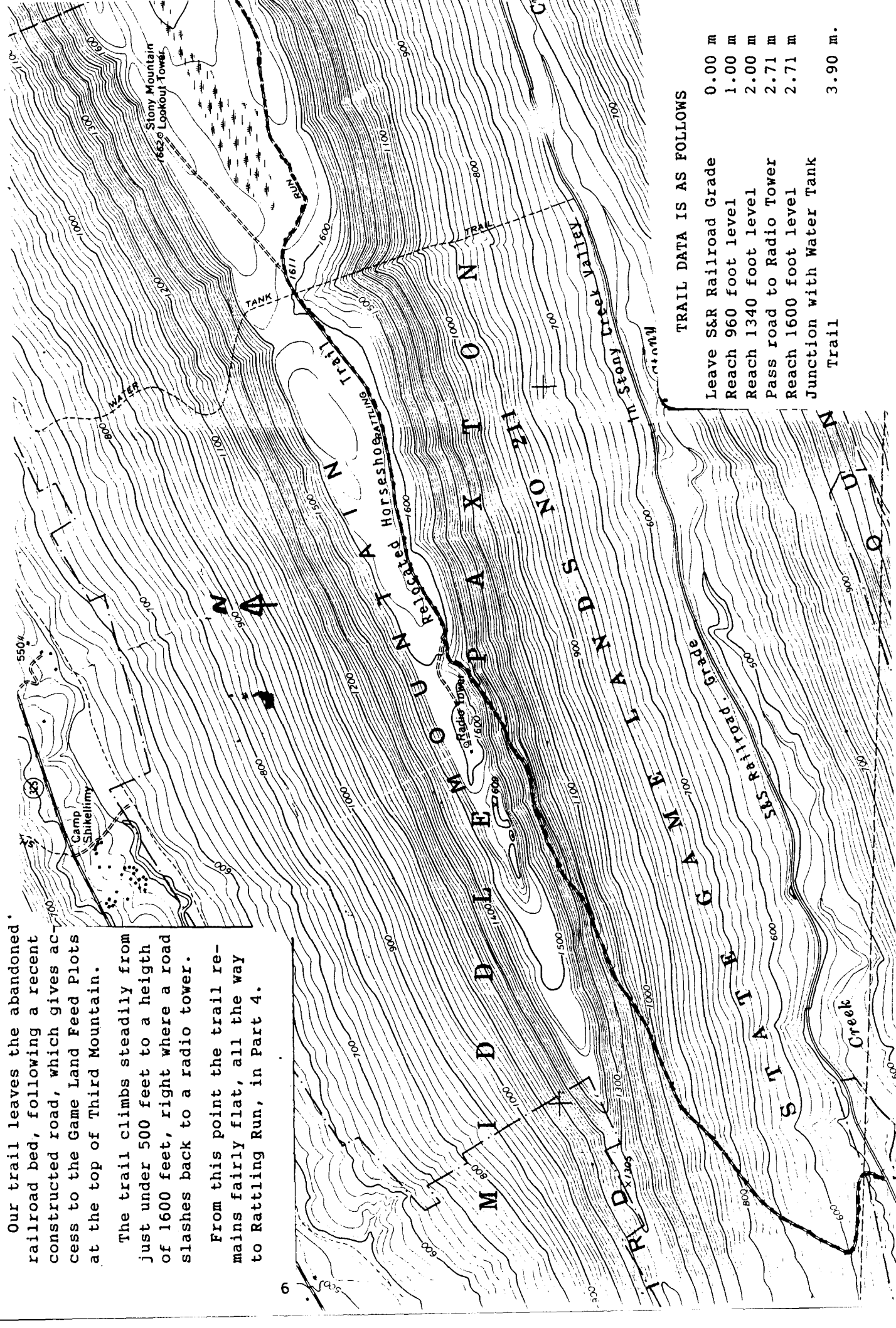
OUR FAVORITE HIKES - NO 22 -- RELOCATED SECTION OF THE HORSE-SHOE TRAIL - PART 3 OF 4

Part 3 takes you from the abandoned bed of the S&S Railroad to the junction with the Water Tank Trail.

Our trail leaves the abandoned railroad bed, following a recent constructed road, which gives access to the Game Land Feed Plots at the top of Third Mountain.

The trail climbs steadily from just under 500 feet to a height of 1600 feet, right where a road slashes back to a radio tower.

From this point the trail remains fairly flat, all the way to Rattling Run, in Part 4.



TRAIL DATA IS AS FOLLOWS

Leave S&S Railroad Grade	0.00 m
Reach 960 foot level	1.00 m
Reach 1340 foot level	2.00 m
Pass road to Radio Tower	2.71 m
Reach 1600 foot level	2.71 m
Junction with Water Tank Trail	3.90 m.