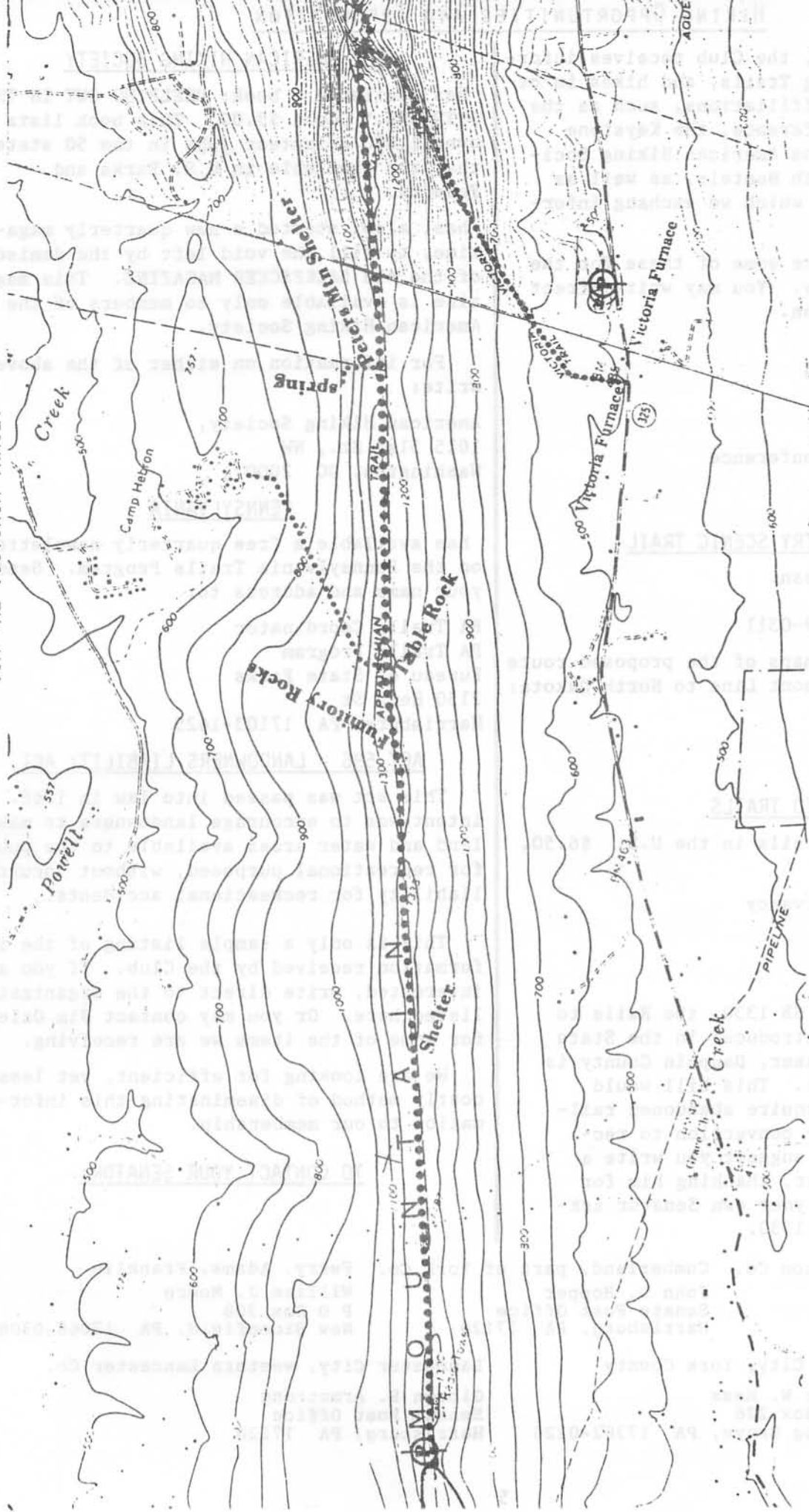


FAVORITE HIKES - No. 9 THE APPALACHIAN TRAIL ON PETERS MOUNTAIN, RT 225 TO RT 325 VIA THE VICTORIA TRAIL.



We have been requested to do a series on the Trails our Club maintains. Therefore, for the next seven issues, we will devote this series to the Appalachian and the Darlington Trails.

We are starting with the old favorite, starting at the Parking Lot on Peters Mountain, just off Route 225.

For this hike, a car should be spotted along Route 325, or parked in the Game Commission Parking Lot, along Route 325, near the entrance to the Victoria Trail, which comes out near Victoria Farm and Historic Victoria Furnace.

From the Parking Lot, it is .6 mile to the Power Line, with excellent views; 1 mile to a shelter on the right; 1.9 miles to the Fumitory Rocks; 2.1 miles to Table

Rock and the Camp Hebron Trail to the left; 3 miles to the Peters Mountain Shelter; 3.7 miles to the junction with the Victoria Trail.

It is then 1.4 miles down the Victoria Trail, to Route 325, and 1.7 miles, approximately to the Game Commission Parking Lot. This makes the hike about 5.1 to 5.4 miles.